



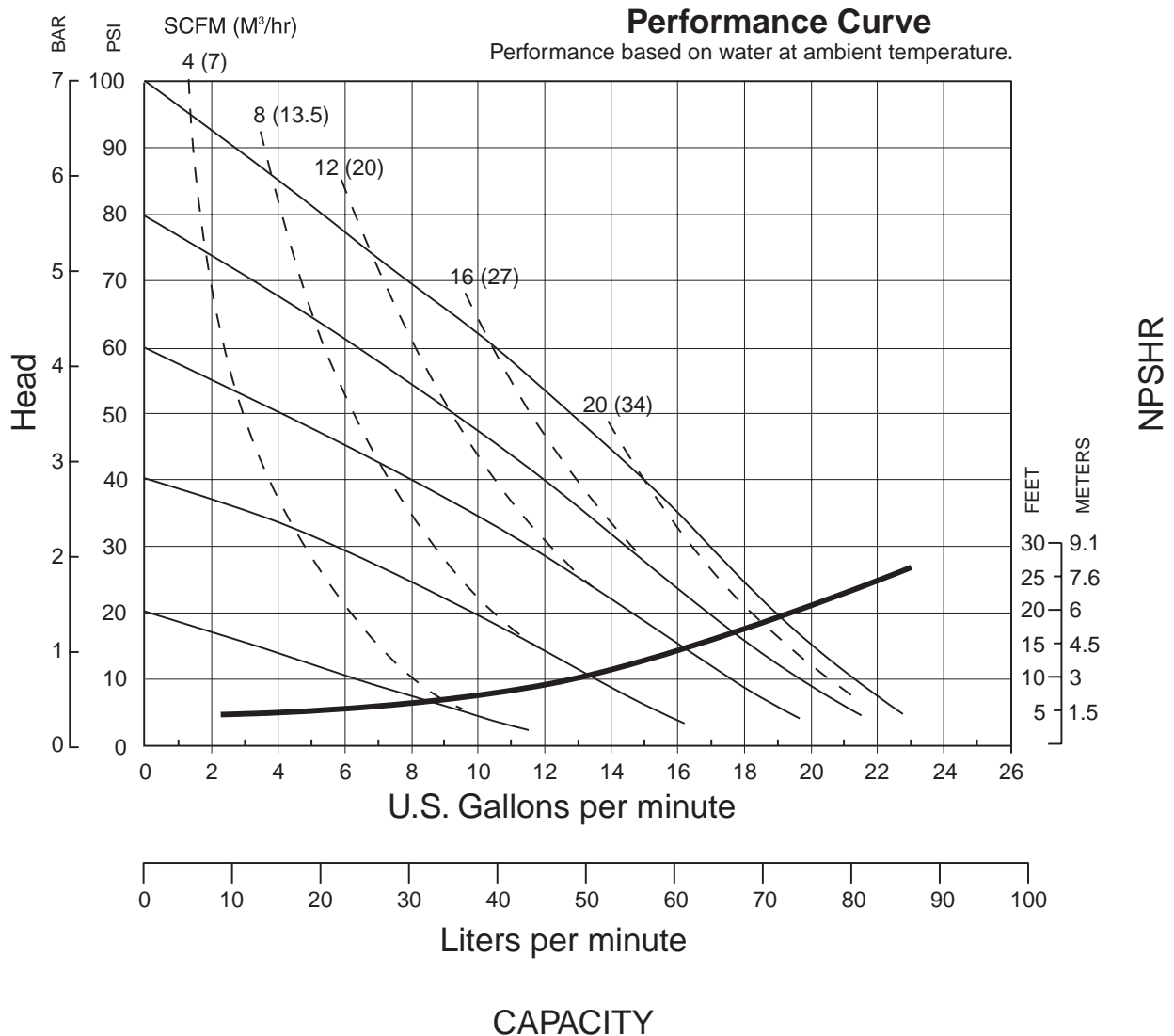
Models 4061, 4063

Non-Metallic Ball Valve

Air-Powered Double-Diaphragm Pump

ENGINEERING, PERFORMANCE
& CONSTRUCTION DATA

INTAKE/DISCHARGE PIPE SIZE		CAPACITY	AIR VALVE	SOLIDS-HANDLING	HEADS UP TO	DISPLACEMENT/STROKE
INTAKE ¾" NPTF (BSP)	DISCHARGE 1½" NPTM (BSP)	0 to 23 gallons per minute (0 to 87 liters per minute)	No-lube, no-stall design	Up to .15 in. (4 mm)	100 psi or 231 ft. of water (7 Kg/cm ² or 70 meters)	.026 Gallon / .098 liter



Powerwise pumps are designed to be powered only by compressed air.

Model 4061, 4063

Model	Pump Size	Check Valve Type	Design Level	Wetted Material	Diaphragm/Check Valve Materials	Check Valve Seat	Non-Wetted Material Options	Porting Options	Pump Style	Pump Options	Kit Options	Shipping Weight lbs (kg)
4063	07	B	1	P	1	P	A	N	S	0	00.	17 (8)
4061	07	B	1	P	2	P	A	N	S	0	00.	17 (8)

Pump Size
07=1/2"

Check Valve Type
B=Ball

Wetted Material
P=Polypropylene

Diaphragm/Check Valve Materials
1= Santoprene/Santoprene
2= PTFE-Santoprene Backup/PTFE

Check Valve Seat
P=Polypropylene

Non-Wetted Material Options
A=Painted Aluminum
Q=Epoxy Coated Aluminum

Porting Options
N=NPT Threads

Pump Style
S=Standard

Pump Options
0=None

Kit Options
00=None

Materials

Santoprene® Injection molded thermoplastic elastomer with no fabric layer. Long mechanical flex life. Excellent abrasion resistance.

Virgin PTFE Chemically inert, virtually impervious. Very few chemicals are known to react chemically with Teflon: molten alkali metals, turbulent liquid or gaseous fluorine and a few fluoro-chemicals such as chlorine trifluoride or oxygen difluoride which readily liberate free fluorine at elevated temperatures.

For specific applications, always consult a "Chemical Resistance Chart".

Operating Temperatures

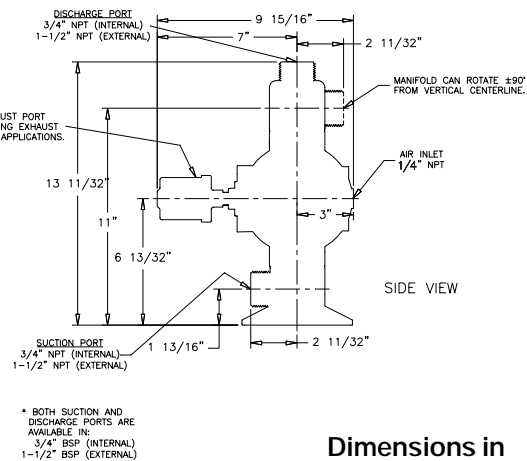
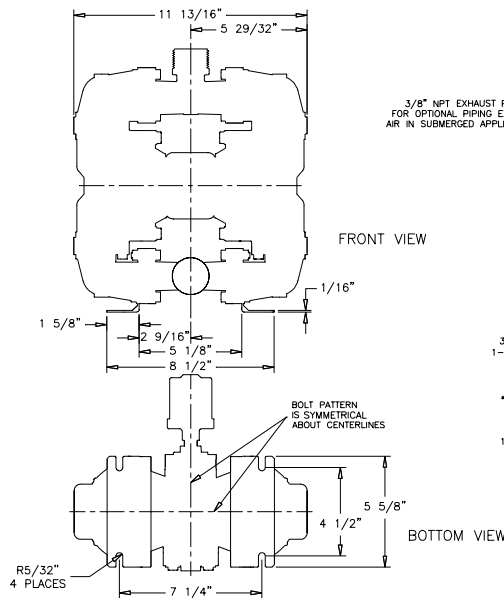
Max*	Min*	Optimum**
212°F 100°C	-10°F -23°C	50° to 212°F 10°C to 100°C

Max*	Min*	Optimum**
212°F 100°C	-35°F 37°C	50°F to 212°F 10°C to 100°C

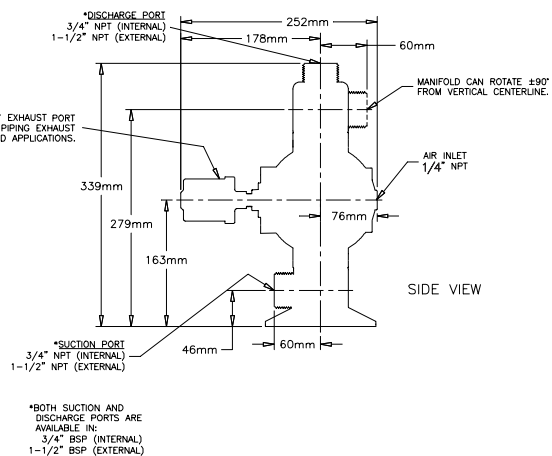
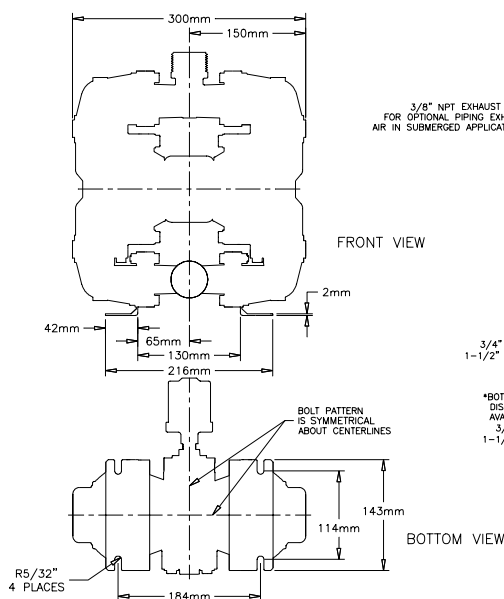
* Definite reduction in service life.
** Minimal reduction in service life at ends of range.

Dimensions are ± 1/8" (3mm)

Unit shown with 3M sound dampening muffler



Dimensions in inches.



Dimensions in millimeters.